

## VEHICLE EXPOSED TO SUNLIGHT

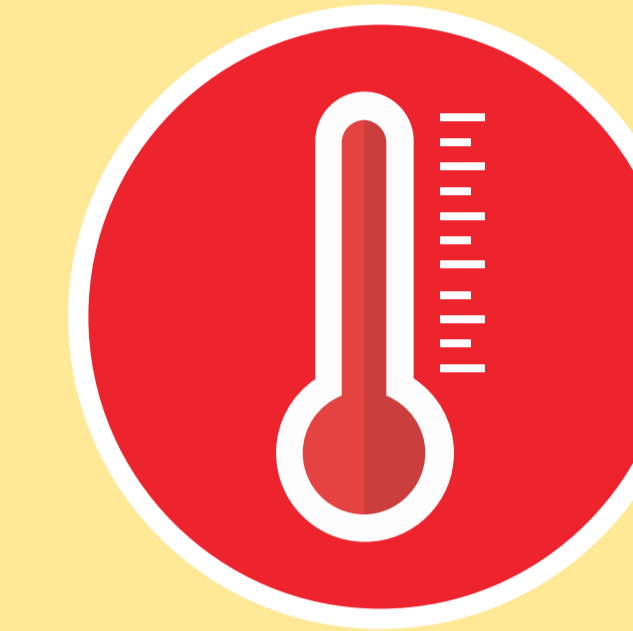
39°



With an ambient temperature of 39 °C, the temperature inside the vehicle may exceed 70 °C.



With an ambient temperature of 29 °C, the temperature inside the vehicle rises almost 20 °C in the first 45 minutes of exposure.



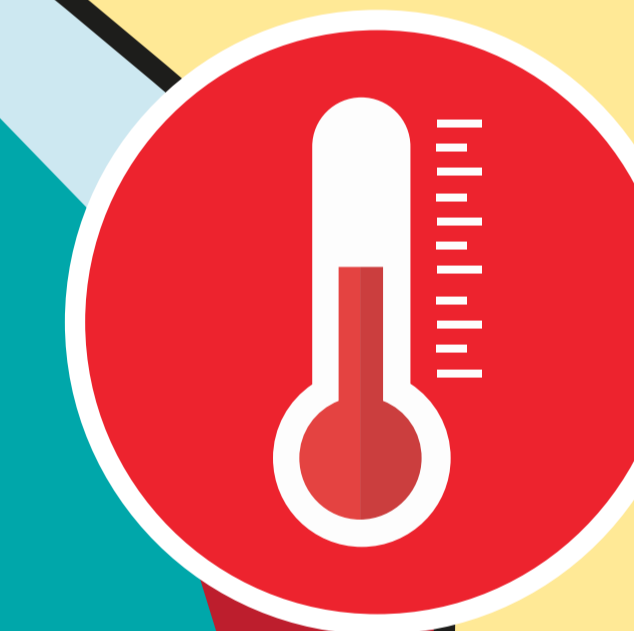
In two and a half hours, without ventilation, the temperature inside the vehicle is 88 percent higher than the temperature outside

67°

HEADREST

54°

SEAT



Depending on height, the temperature inside a vehicle may vary 13 °C

