

THIS IS HOW A CHILD SHOULD BE PROPERLY SECURED IN A CHILD CAR SEAT

HOW TO CORRECTLY SECURE A CHILD IN A CHILD CAR SEAT

The child is secured with a **3 or 5-point harness.**

All harnesses should be equally tightened and not folded in any way.

In addition, it may have a **support leg** to stop the seat from tipping.

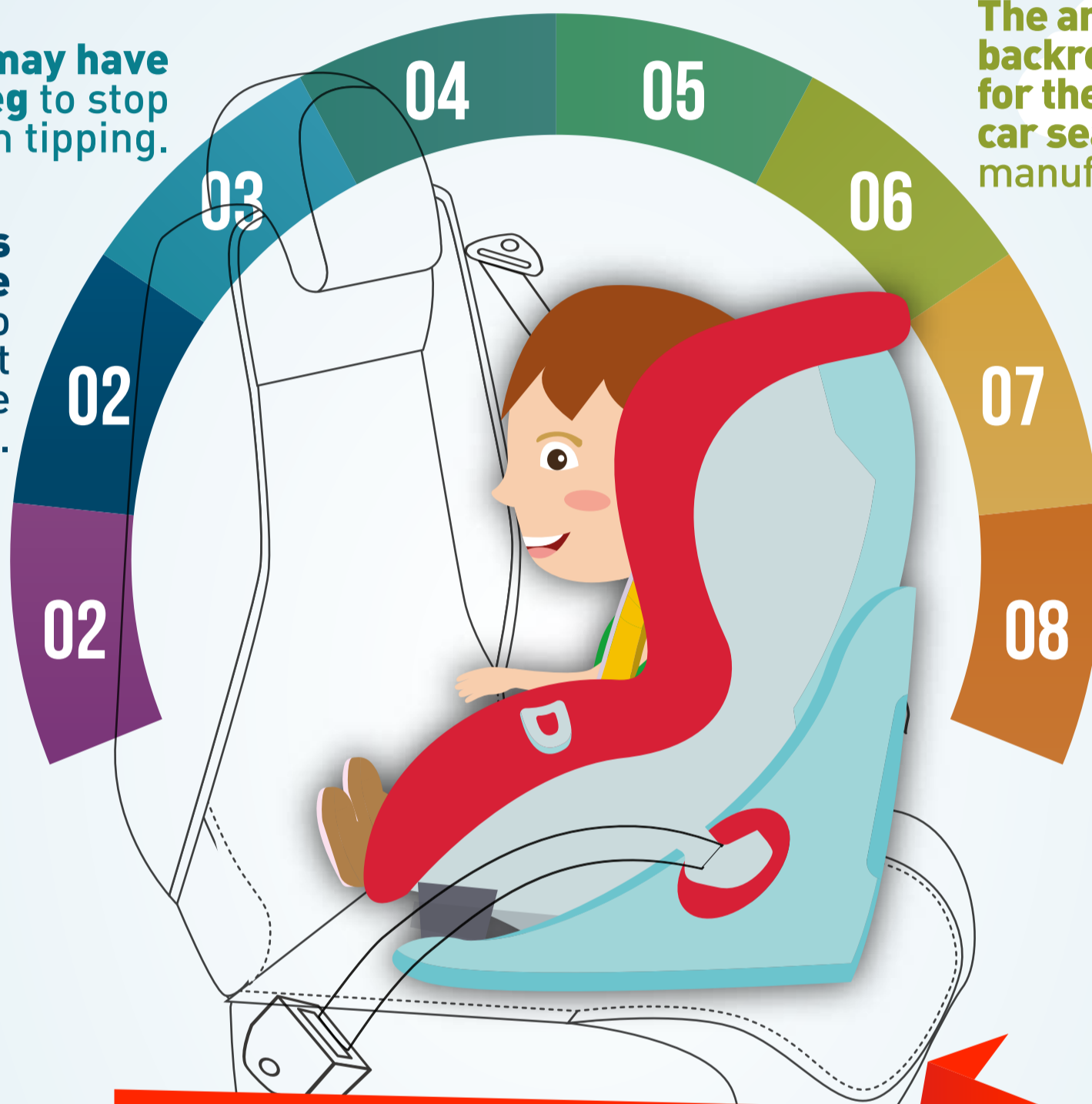
The angle and height of the backrest should be adjusted for the child and the child car seat, following the manufacturer's instructions.

The manufacturer's instructions must be followed in order to thread the seat belt through each of the indicated slots.

The child car seat is anchored to the seat with **ISOFIX** (less likelihood of error) or with a seat belt, depending on the anchorage chosen.

Rear-facing child car seats offer the best protection for the most vulnerable parts of the child such as their head, neck and spine.

They should be used for as long as possible and at least until the child is 4 years old.



REAR-FACING CHILD CAR SEAT

**REMEMBER:
A GOOD CHILD CAR SEAT IS COMPLETELY USELESS
IF THE CHILD IS NOT PROPERLY SECURED IN IT**

